

T24 RIGGING DOCUMENTATION



- **T24 RIGGING ELEMENTS** page 3

- **T24 RIGGING SETUPS** page 6
 - 1. **Single Box rigging** page 7
 - 2. **Two or more Boxes** page 7
 - 3. **Cluster rigging** page 10
 - 4. **Rigging clusters** page 12

T24 RIGGING ELEMENTS:

1

CBT24 – the Cradle Bar for the T24. Mounted on top of the Box. Please check the angling of the Bar.

It has the same angling than the T24 itself and can only be mounted in one direction.

**2**

BBT24 – the Backbone of the T24. This part gives you the stability you need when mounting two or more T24 on top of each other.



- 3** **BAT24** – adapts the backbone (**BBT24**) to the main cradle (**MCT24**) when building a cluster of 2 or more T24.



- 4** **BCT24** – adapts the backbone (**BBT24**) to the cradle bar (**CBT24**).

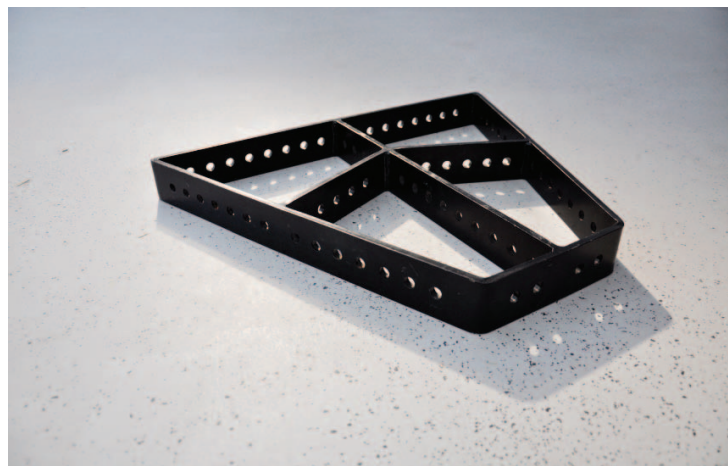
This element is used when rigging two or more T24 w/out the main cradle (**MCT24**).

The holes are also used as pinpoints in the EASE FOCUS simulation Data.



- 5** **MCT24** – the main cradle. Used for clustering 2 or more T24 aside and underneath each other.

You can interconnect multiple MCTs for a larger cluster.



- 6** No – this is not a dead Octopus – this is the **ASK44**. The Rigging chain for the **MCT24**.



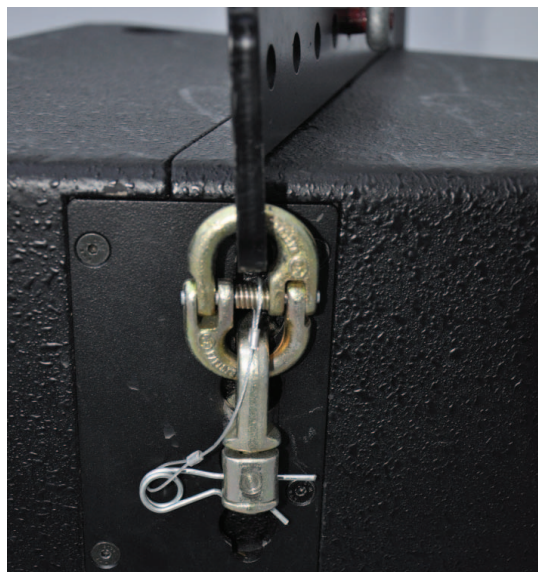
- 7** **BLT24** - the Boxlinks. Used to assemble T24s underneath each other.



Now that we have gone through all the elements,
let's take it step by step...

T24 RIGGING SETUPS:

The basic element for all rigging setups is the **CBT24**.
The following pictures show the correct assembling to the T24.



**MAKE SURE THAT THE CARGO STUDS ARE LOCKED
SECURELY!!!**



1. Single Box rigging

This is the most simple way of rigging the T24 with a **CBT24**. Just as the picture shows – this is a very simple way of rigging the T24. When using this rigging option, you will not have the possibility of dedicated angling. The angling can only be done by straps, etc...



2. Two or more Boxes rigged underneath each other:

- Attach the **CBT24** to the Box
- Mount the **BCT24** with its screws to the **CBT24**.
- Attach the **BBT24** to the Box by starting on the lower handle.





Open the pin to tilt the top part of the **BBT24** to attach it to the upper handle.



Lock the upper part of the **BBT** in the upper handle by re-inserting the pin.



Attach the **BBT** to the **BCT** – Already confused? Just do it like the following picture!



This is how it should look like when everything was done correctly.

! PLEASE CHECK ALL CONNECTIONS AFTER MOUNTING THE RIGGING ELEMENTS !

Now you can easily add up to 6 boxes underneath each other. Therefore you need the **BLT24**. Pull up the Box you have already rigged up to the height where you can set one more Box underneath it. Then connect the next Box **BBT** to **BBT** and use the Boxlinks (**BLT24**) to angle them.



The angling is done by the holes of the **BLT24**s. Every left out hole gives you 6° of angle.



This picture shows you an angle of 12° inbetween the speakers. The overall angling is done by the choice of the pinpoint in the **BCT24**. The simulation can be done in EASE FOCUS.

! PLEASE CHECK ALL CONNECTIONS AFTER MOUNTING THE RIGGING ELEMENTS

3. Cluster rigging

To get a dedicated angling not only in vertical position, but also in horizontal position you can use the **MCT24**. With the Main Cradle it is possible to hang multiple Boxes underneath and side a side of each other.

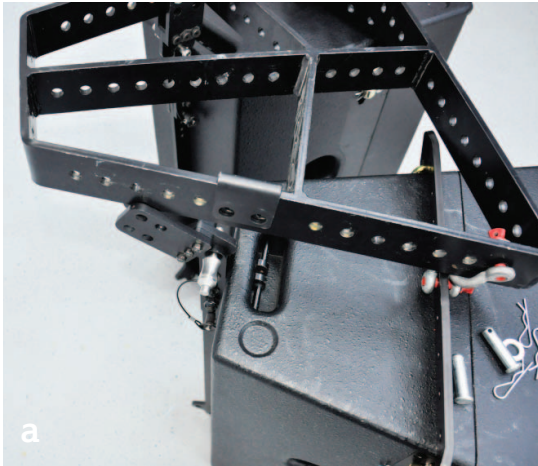
Again-we need the **CBT24** and the **BBT24**. This time we need two shakles connected to the **CBT24**.

We also need the **BAT24**. The Adaptions for the **BBT** to the Main Cradle. Setup your speakers like this:



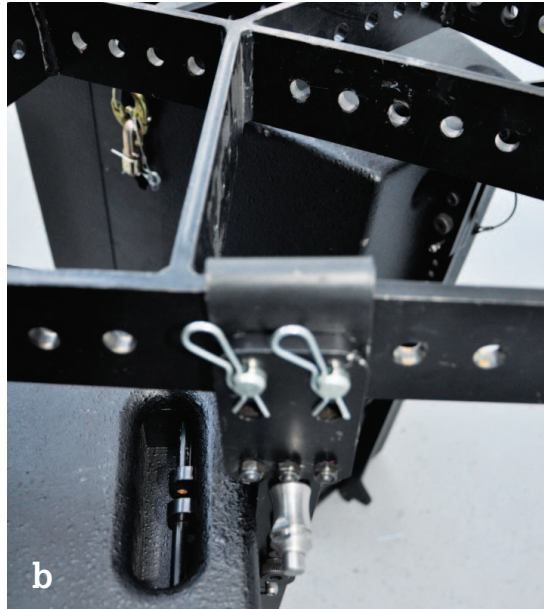
Here you can see the two **BATs** prepared. They are simply attached to the **BBTs** via the top Pin.





Attach the **MCT** to the top shakles of the **CBT**.

Open the pins on the **BATs** and remove the adapter-part.



Here you can see the two **BATs** prepared. They are simply attached to the **BBTs** via the top Pin.

! This has to be done on both sides!!! !



Attach the **ASK44** to the **MCT24** using the shakles delivered with the **ASK44**. The main cradle should always hang almost straight.



Now rig up your speaker cluster and save it according to the safety-regulations in your country.

4. Rigging clusters

- When rigging e.g. 4pieces of T24 in one Cluster, it is important to bring the Loudspeakers as close together as possible at their lower end.
- Set up all 4 loudspeakers on top of each other using the BBT and the BLT.
- Then connect the MCT as described above to the BAT and the CBT.

The Shown Setup gives you an Angle of -1° on the lower box and since we left two holes free in the BLT rigging the lower Box has an angle of -13° .



This is the rigging of the MCT for -1° and -13° with a 4pc. Cluster:



Side View:



Front View:

